

DID YOU KNOW?

THE ECONOMIC CONTRIBUTION OF THE FILM AND TELEVISION INDUSTRY IN AUSTRALIA: A STATISTICAL SNAPSHOT

2012-2013 FILM AND TV INDUSTRY EMPLOYMENT

Direct Contribution

39,025

FILM & TV - PRODUCTION,
DISTRIBUTION & EXHIBITION

21,423 Jobs



TELEVISION BROADCASTING

11,178 Jobs



HOME ENTERTAINMENT

6,424 Jobs



Whole Economy Contribution

46,632



2012-2013 FILM AND TV INDUSTRY VALUE ADDED (GDP contribution)

Direct Contribution

4,853 million \$

Whole Economy Contribution

5,812 million \$



2012-2013 FILM AND TV INDUSTRY TAX REVENUE

Corporation Tax

498 million \$

TOTAL TAX REVENUE

1,976 million \$

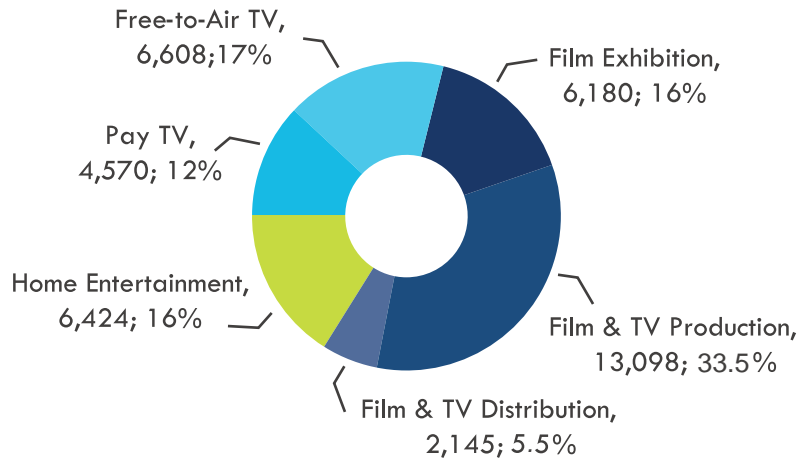
Income Tax

454 million \$

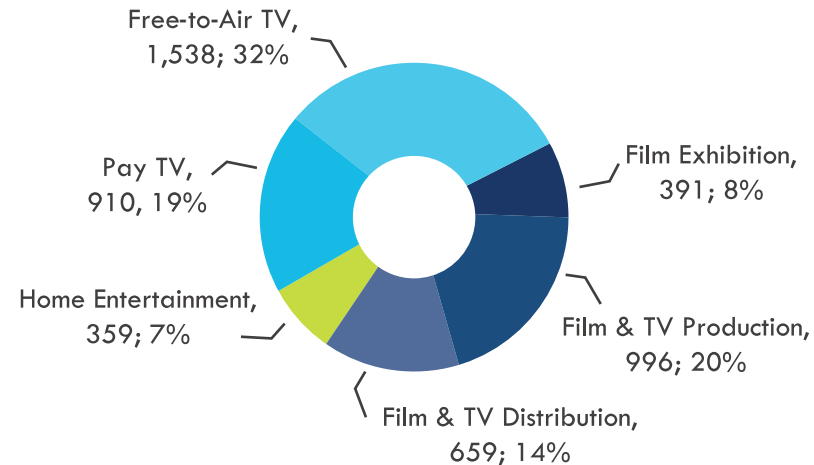
GST paid by consumers

1,023 million \$

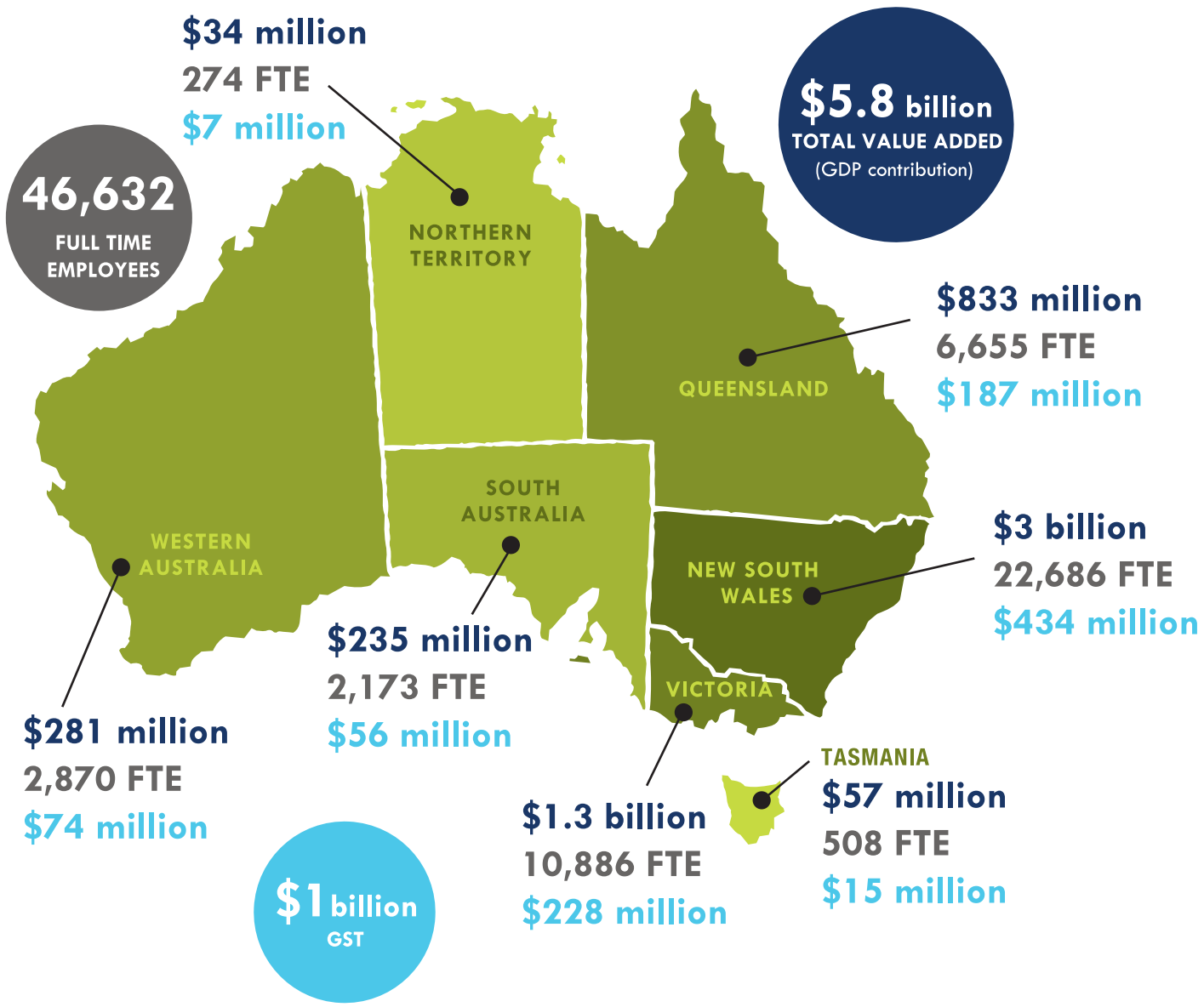
DIRECT EMPLOYMENT CONTRIBUTION TOTAL = 39,025 Full Time Jobs



DIRECT VALUE ADDED (GDP contribution) TOTAL = \$4,853 million



*Film & TV - Production, Distribution & Exhibition
Australian filming location - image courtesy of AusFilm 2014.



The Economic Contribution of the Film and Television Industry in Australia Report by Deloitte Access Economics is supported by the following organisations:



Note: Figures are from 2012-13. The full report can be viewed and downloaded at <http://www.screenassociation.com.au/>